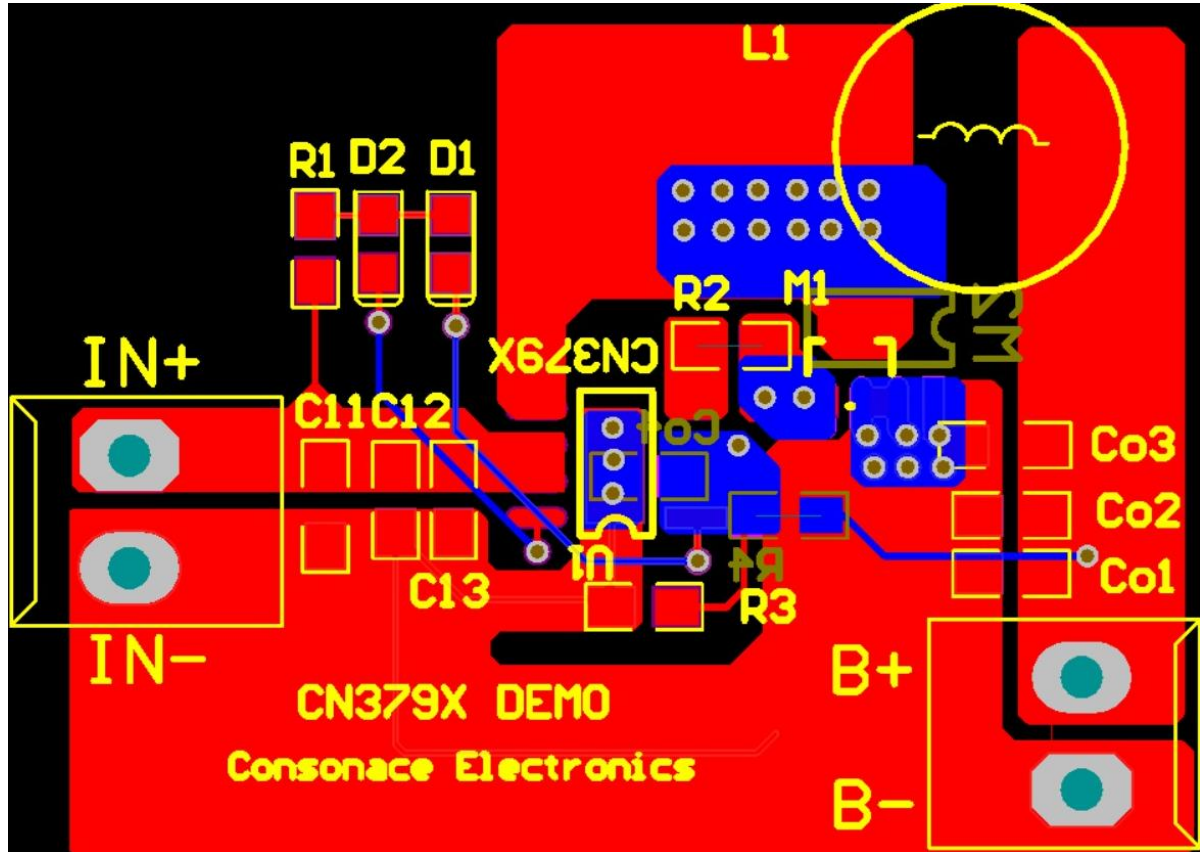


Quick Start of CN379X Demo Board

1、 Overview

The CN379X demo board is for the purpose of fast evaluation of CN3796 and CN3798.

2、 PCB Layout of CN379X Demo Board



3、 Component List and Descriptions

No.	Name	Description
1	IN+	Positive Terminal of Input Power Supply.
2	IN-	Negative Terminal of Input Power Supply (GND).
3	B+	Positive Terminal of Battery.
4	B-	Negative Terminal of Battery (GND).
5	M1	The N-Channel MOSFET which is available in SOP8 package or in SOT23 package can be used.
6	CN379X	The Charger IC CN3798 and CN3796.
7	D1	The LED for Charging Status Indication.
8	D2	The LED for Charging Terminal Status Indication.
9	L1	Inductor. Generally used 2.2uH.
10	R1	Charging indicator light current limiting resistor.
11	R2	DRV drive resistor, generally used 0 ohm.
12	R3	10k resistor. Resistance is prohibited for battery temperature detection.

13	R4	Output voltage setting resistor. When using 0 ohms, the output voltage is 4.2V. Connecting a resistor in series can increase the output voltage. Please refer to the CN379X datasheet for details.
14	C11/C12/C13	Input Bypassing Capacitor.
15	Co1/Co2/Co3	Output Bypassing Capacitor.
16	Co4	Output Bypassing Capacitor. generally used 1uF.